

1575 MHz GPS Notch Filter

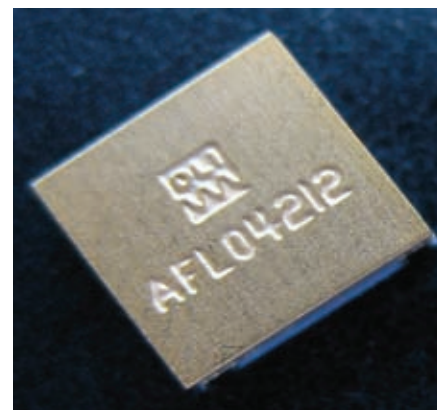


Features

- Low loss in passband region
- Small size
- Includes integral metal cover
- Temperature stable

Description

- Surface mount, thin film filter on high dielectric constant ceramic.
- Filter Material: DLI's proprietary CF ceramic [K=23].
- Cover Material: 430 Stainless Steel, annealed.

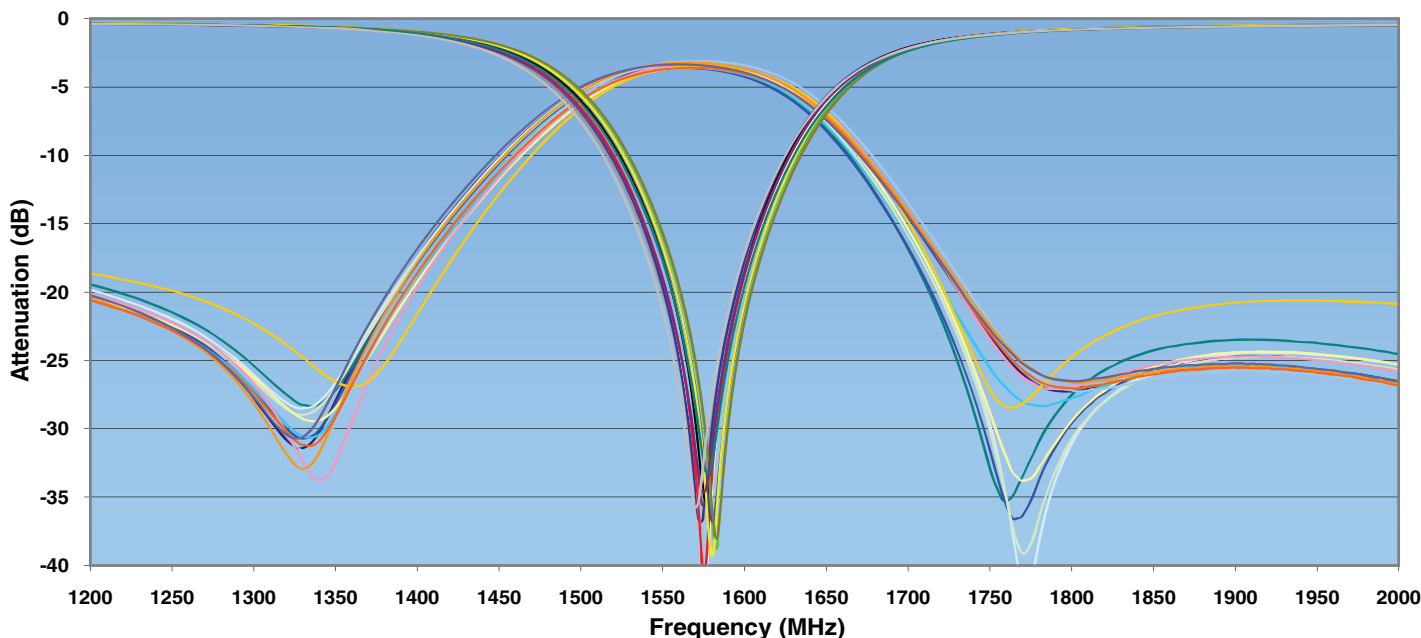


Electrical Specifications

| Parameter | Frequency (MHz) | Typical @ 25°C |
|----------------|---------------------|----------------|
| Insertion Loss | 700-1300; 1800-3000 | 1.5 dB |
| Return Loss | 700-1300; 1800-3000 | 12 dB |
| Attenuation | 1570-1580 | 20 dB |

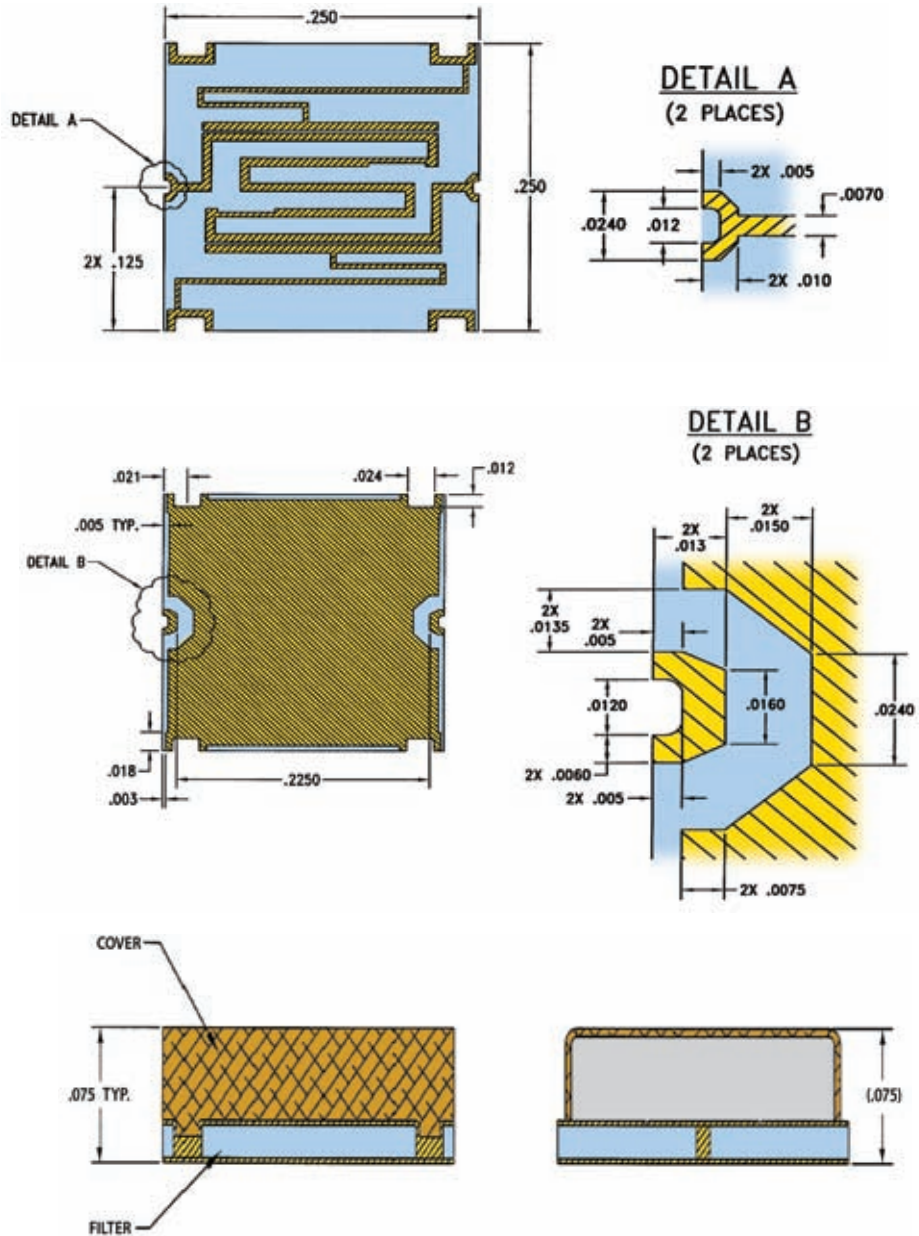
Frequency Response

Typical Data -13 Samples



1575 MHz GPS Notch Filter

Mechanical Specifications



www.dilabs.com

Dielectric Laboratories, Inc.

2777 Route 20 East, Cazenovia, NY 13035 USA

Phone: (315) 655-8710

Fax: (315) 655-0445

Email: sales@dilabs.com